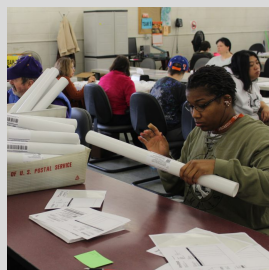


# Services Offered



**Recreation and Leisure**



**Work Skills Training**



**Community-Based Work Teams**



**Art Program**



**Accessing Community Experiences (ACE)**



**Employment Services**



Day and Employment Services

360 Hoover St NE  
Minneapolis, MN 55413  
[www.accessability.org](http://www.accessability.org)



PERSON-CENTERED  
SERVICES THAT FOCUS  
ON WHAT IS IMPORTANT  
**TO AND FOR THE**  
INDIVIDUAL.

## LIVING SKILLS AND RECREATION SERVICES

### Recreation and Leisure



Program that offers a variety of structured classes ranging from cooking to sports and leisure.

All classes incorporate community integration at varying levels.

### Art Program

Focused on building community through planning and participating in social activities

In-center options such as baking, art, and interacting with technology

Community-based activities like bowling, shopping, and museums



### Accessing Community Experiences (ACE)

Designed to meet the needs of adults who may not benefit from a traditional vocational component

Community inclusion, social activities, and life enrichment are the primary focuses of the ACE program



Designed to enhance participants' skills and abilities through classes and recreational/leisure activities

ACCESSABILITY CAN ACCEPT FUNDING FROM A VARIETY OF SOURCES INCLUDING MEDICAL ASSISTANCE, MEDICAID WAIVER, COUNTY FINDING AND/OR PRIVATE PAY

## EMPLOYMENT-RELATED SERVICES

### Work Skills Training

On-site sub-contract employment opportunities to earn an income. Vocational training provided. Jobs are in:  
-Assembly  
-Packaging  
-Mailing



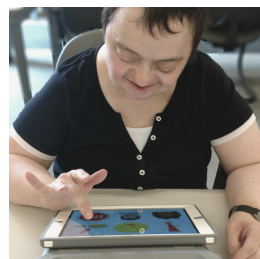
### Community-Based Work Teams

Off-site employment roles at a variety of Twin Cities businesses while still offering training opportunities and support services.



### Employment Services

Additional assistance in finding an independent community job that match a person's skill and interests. This includes:  
-Employment Exploration  
-Employment Development  
-Employment Support



ACCESSABILITY'S MISSION IS TO PROVIDE OPPORTUNITIES FOR SELF-SUFFICIENCY FOR PEOPLE WITH BARRIERS TO EMPLOYMENT AND COMMUNITY INCLUSION.

The Day and Employment Services program is designed to enhance your skills and abilities through:

- Community Employment
- Vocational Services
- Recreational Activities
- Community Inclusion

Services are innovative, person centered and flexible. Our objective is to be leaders in enriching the lives of and growing inclusion opportunities for the people we serve.